



Aerosol Spray Texture

HOMAX Ultra-Fast Drying Orange Peel

- Oil-based formula
- Patches orange peel & splatter textures
- Ultra-fast drying
- Covers up to 110 sq. ft.



Prod #	Model #	Size	Cans/Box	Unit	Wt/Bx
72050	4055-06	20 oz.	6	Bx	10

HOMAX Knockdown

- Water-based, low-odor formula
- Sprays multiple patterns
- For patching Southwest or Mediterranean style textures
- Covers up to 60 sq. ft.



Prod #	Model #	Size	Cans/Box	Unit	Wt/Bx
72055	4065-06	20 oz.	6	Bx	10.5

HOMAX Color-Changing Orange Peel

- Water-based
- For repairing and patching interior heavy splatter or knockdown drywall textures
- Water clean-up
- Covers up to 90 sq. ft.



Prod #	Model #	Size	Cans/Box	Unit	Wt/Bx
72060	4096-06	16 oz.	6	Bx	10

**Changes color, blue to white.*

HOMAX Water-Based Orange Peel

- Water-based
- Water cleanup, low odor, fast drying
- Patches orange peel and splatter textures
- Covers up to 110 sq. ft.



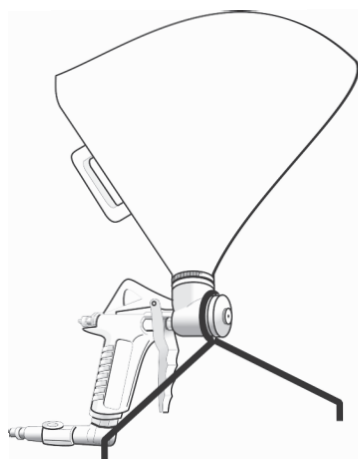
Prod #	Model #	Size	Cans/Box	Unit	Wt/Bx
72070	4092-06	20 oz.	6	Bx	10.5

Spraying Mantis® Hopper Gun and Parts



Spraying Mantis Hopper Gun and Parts

- Aluminum one-piece body
- Includes air regulator valve
- Operates on any compressor with minimum 7 cfm at 25 psi



Prod#	Stock#	Desc	Pcs/Ea	Unit	Wt/Unit
70210	55-050	Spraying Mantis Hopper Gun	1	EA	7
70215	55-057	Repair Kit	1	EA	1
70220	55-058	Deluxe Repair Kit	1	EA	2
70230	55-060	Material Orifice Set	1	EA	0.40
70270	55-090	Hopper Only	1	EA	3
70275	55-091	Flexible Connector w/Clamps	1	EA	0.40
70280	55-092	Bi-Pod Stand	1	EA	0.80
70285	55-093	Mantis—Gun Only	1	EA	5

LACO Texture Guns



TG 600 Hand Pump Texture Gun Polycarbonate Front

- Easy to apply
- Fully adjustable spray tips to match original Orange Peel, Knockdown and Acoustic Textures
- Completely disassembles for easy cleaning
- Big savings compared to spray cans
- 64 oz. jar



Prod#	Model#	Unit	Wt/Ea
70400	TG 600	EA	5

* Call for replacement parts

TG 950 Hand Pump Texture Gun Solid Brass Construction

- Easy to apply
- Fully adjustable spray tips to match original Orange Peel, Knockdown and Acoustic Textures
- Completely disassembles for easy cleaning
- Big savings compared to spray cans
- 64 oz. jar



Prod#	Model#	Unit	Wt/Ea
70300	TG950	EA	6

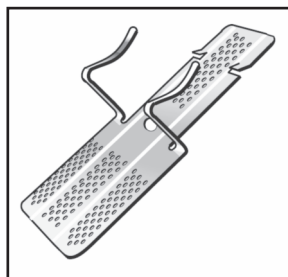
* Call for replacement parts

Drywall Fasteners

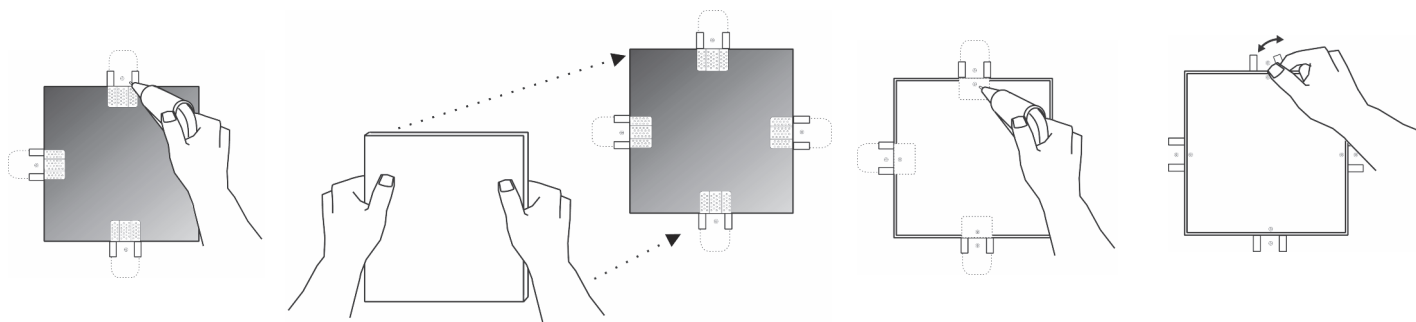
Prest-on®

Insta-back Fastener

Insta-back fasteners make drywall repair quick and easy because cutouts can be reattached without cutting drywall back to the nearest stud (as shown in the illustrations below). Insta-backs make finished butt joints that are "bump free", and save time and money by reducing the number of joints to be finished. Meets all building codes and fire ratings.



Prod#	Desc	Pcs/Ctn	Ctn/Pallet	Unit	Wt/Ctn
71010	1/2"	200	50	CTN	10
71020	5/8"	200	50	CTN	10



1. Place fasteners as shown and secure with drywall screws 3/4" from the edge.

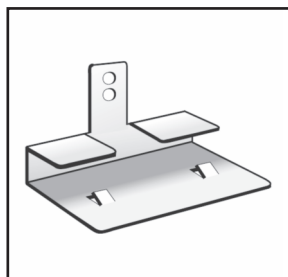
2. Replace drywall patch in hole.

3. Screw through patch into Insta-back fasteners 3/4" from the edge.

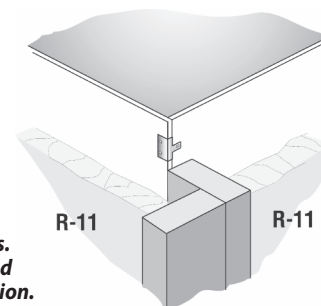
4. Bend Insta-back tabs back and forth until they snap off.

Corner-back Fastener

Corner-back fasteners save you time, money and materials by allowing you to eliminate one stud at almost every corner. By eliminating the need for corner back-up studs, Corner-backs permit corners to be fully insulated (as shown in the illustration at right). This means a significant reduction in thermal loss. Corner-backs also reduce costly callbacks due to ceiling/partition separation from truss uplift. Meets all building codes and fire ratings.



Prod#	Desc	Pcs/Ctn	Ctn/Pallet	Unit	Wt/Ctn
71030	1/2"	300	50	CTN	10
71040	5/8"	300	50	CTN	10



Corner-backs eliminate wood backup at corners and ceilings. The result is faster framing and faster, easier drywall installation.